



## Installation Guide for the DW IP Finder™ for Ubuntu

### Supported/Affected Devices:

DW IP Finder™ for Ubuntu is fully compatible with the following camera models.

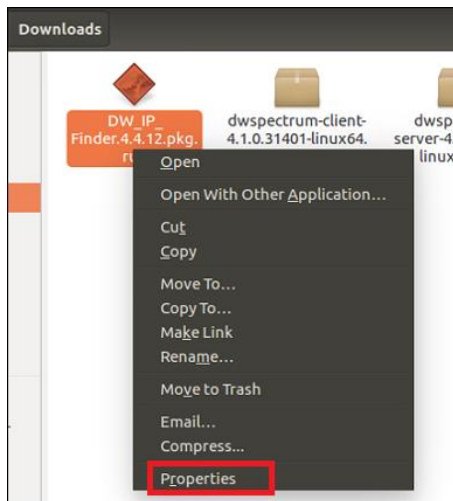
- DW MEGApix® IP cameras using firmware versions beginning with “A”, “S” (i.e. A6.2.x, A7.2.x, A8.2.x, etc.)
- DWC-MBT/MTT/MVT series, DWC-MB9/MT9/MV9 series

**\*\*NOTE:** DW cameras that are not included in the above section may be discovered by DW IP Finder, but will not be fully supported.

### Installing DW IP Finder™ on Ubuntu

- 1) **Right-click** on the **DW\_IP\_Finder.4.4.12.pkg.run** file, then select **Properties**.

\* **Download** and locate the **DW\_IP\_Finder.4.4.12.pkg.run** file in the folder where download(default is *Downloads* folder) if it's not on the computer.

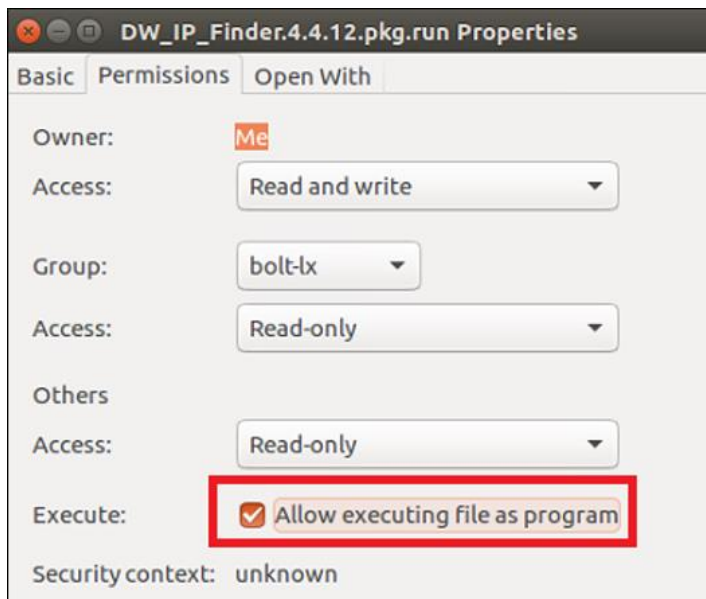


- 2) The *Properties* window will display.

Select the **Permissions** tab and enable the “**Allow executing files as program**” setting, located under ‘Execute’.

Please contact DW Tech Support if you require an assistance with the installation.  
Submit a support request from <https://digital-watchdog.com/contact-tech-support/>  
or call (866) 446-3595 Option 4

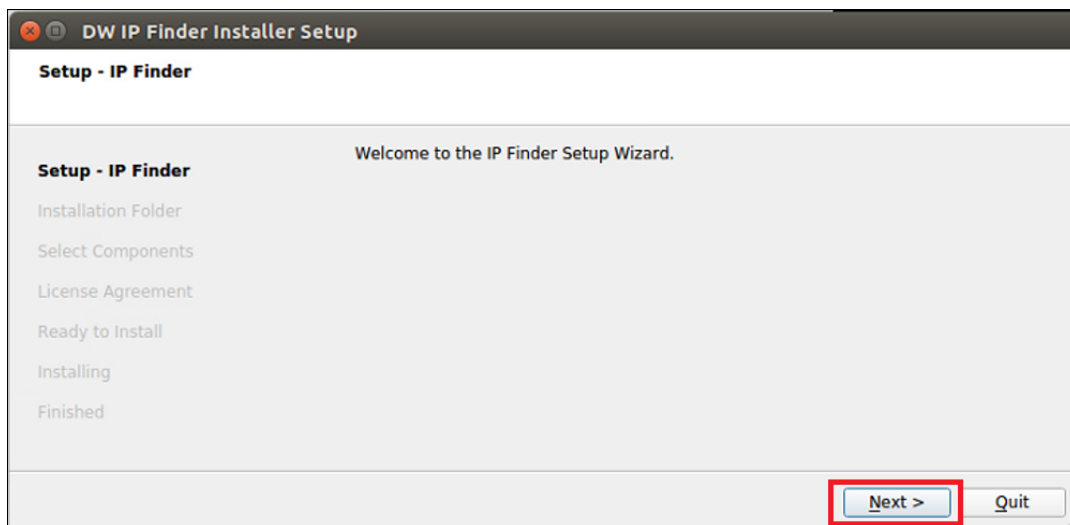
Tech Support Hours: Monday- Friday 9:00am-8:00pm ET (except Holidays)



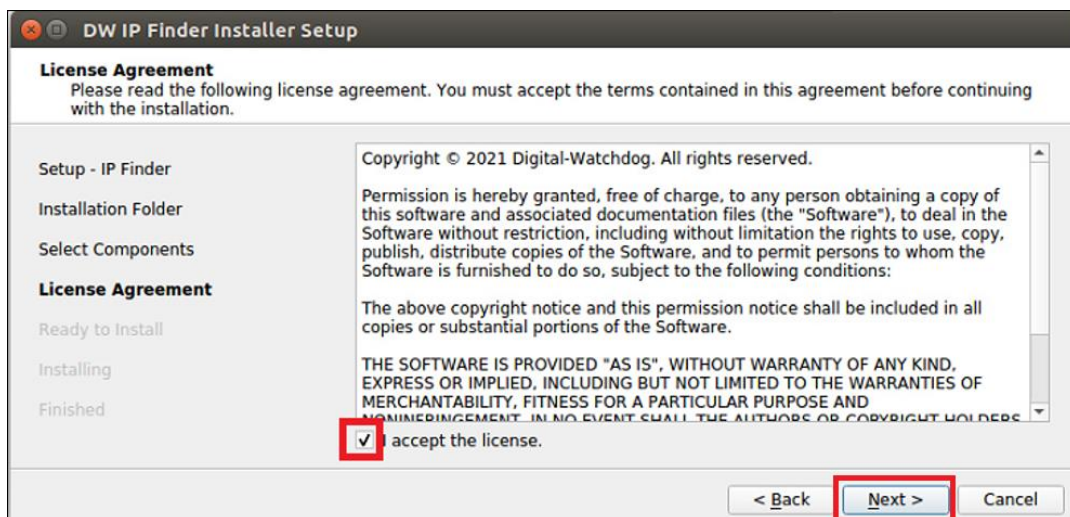
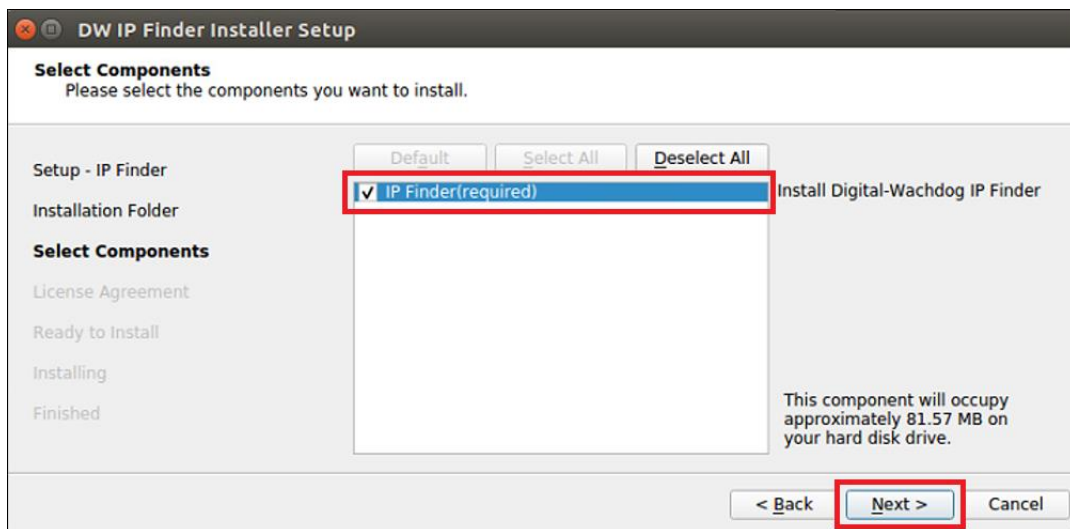
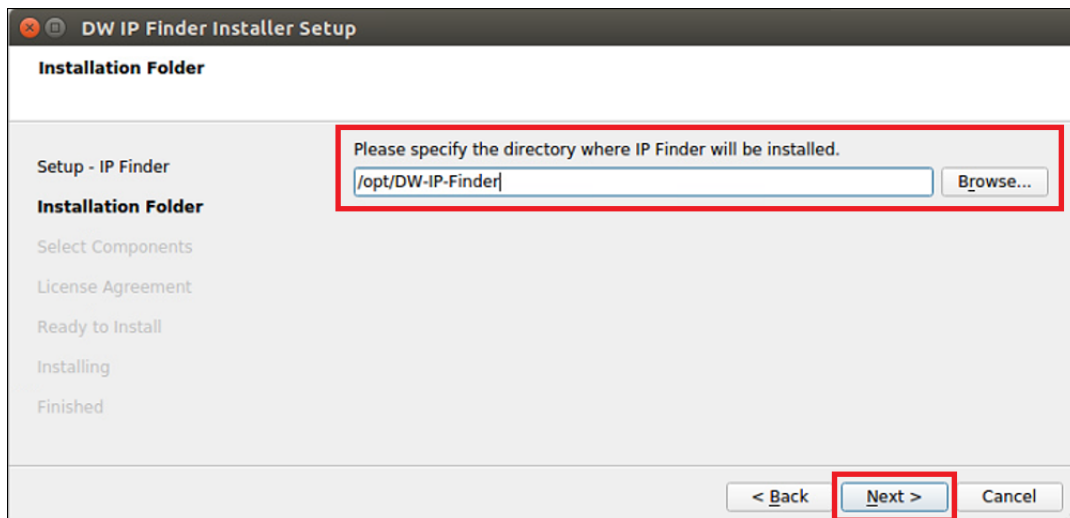
- 3) Next, **double-click** on the **DW\_IP\_Finder.4.4.12.pkg.run** icon to start the installation wizard.



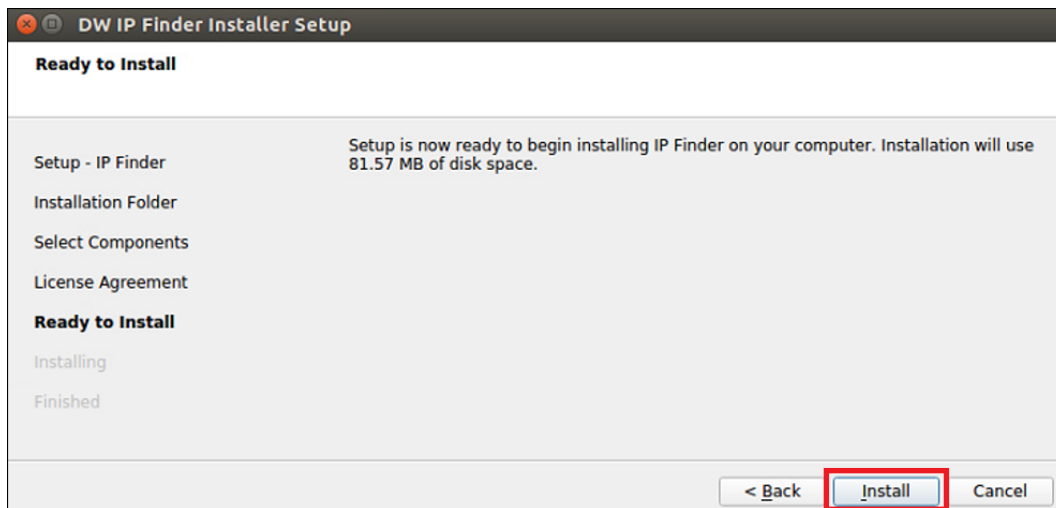
- 4) The *DW Finder Installer Setup* installation wizard will display. Follow through the installation wizard to install the DW IP Finder™ software.



Please contact DW Tech Support if you require an assistance with the installation.  
Submit a support request from <https://digital-watchdog.com/contact-tech-support/>  
or call (866) 446-3595 Option 4  
Tech Support Hours: Monday- Friday 9:00am-8:00pm ET (except Holidays)



Please contact DW Tech Support if you require an assistance with the installation.  
Submit a support request from <https://digital-watchdog.com/contact-tech-support/>  
or call (866) 446-3595 Option 4  
Tech Support Hours: Monday- Friday 9:00am-8:00pm ET (except Holidays)

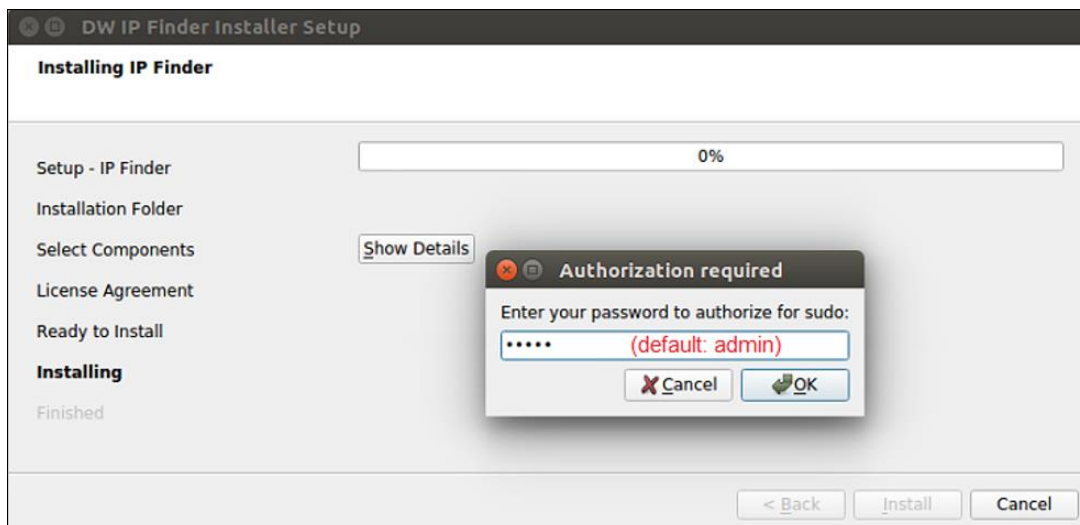


5) If you are installing the DW IP Finder™ software on a DW Blackjack® Server, the installation wizard will prompt you to enter the system's Administrator password.

Enter the computer's Administrator password, then click the **OK** button.

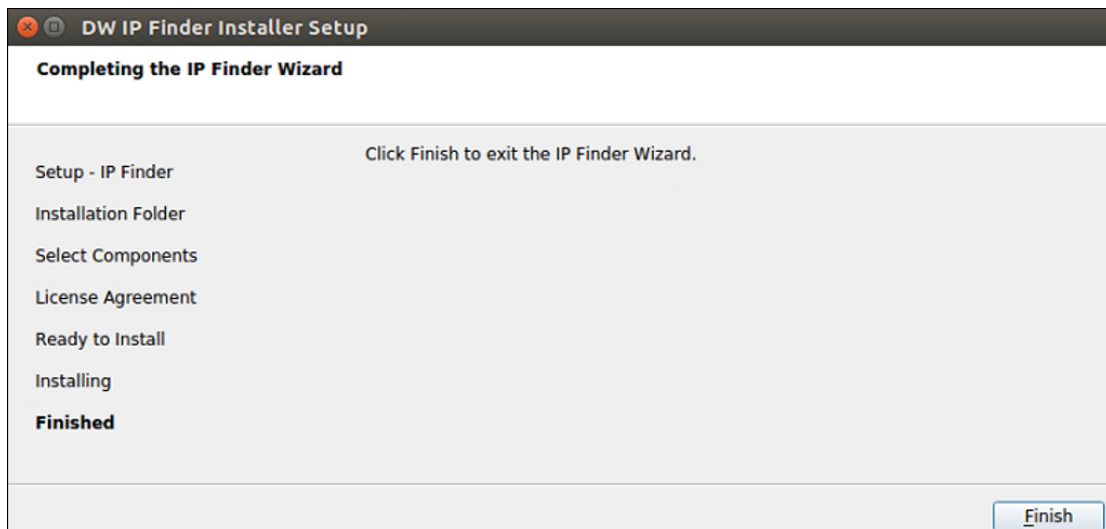
Once the installation has completed, click the **Finish** button.

- For DW Blackjack® units sold using Ubuntu 16.04, the default `sudo` password is "**admin**".
- For DW Blackjack® units sold using Ubuntu 18.04, the default `sudo` password is "**Dw5pectrum**".



Please contact DW Tech Support if you require an assistance with the installation.  
Submit a support request from <https://digital-watchdog.com/contact-tech-support/>  
or call (866) 446-3595 Option 4

Tech Support Hours: Monday- Friday 9:00am-8:00pm ET (except Holidays)

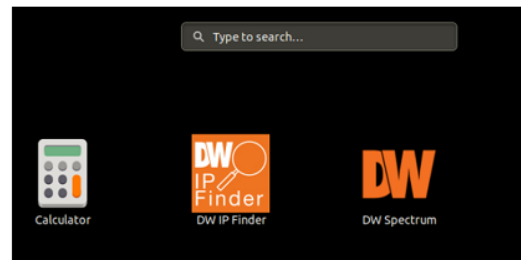


6) DW IP Finder™ can be searched for and launched in the **File Manager** tool.

a. Ubuntu 16.04



b. Ubuntu 18.04



## Creating a Desktop Shortcut for DW IP Finder™

Rather than having to launch DW IP Finder™ using the *Show Applications* tool, a desktop icon can be created as a shortcut. To create a desktop shortcut:

1) Open the **File Manager** and navigate to:

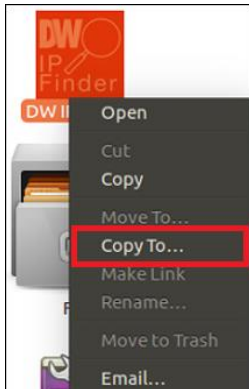
```
/usr/share/applications
```



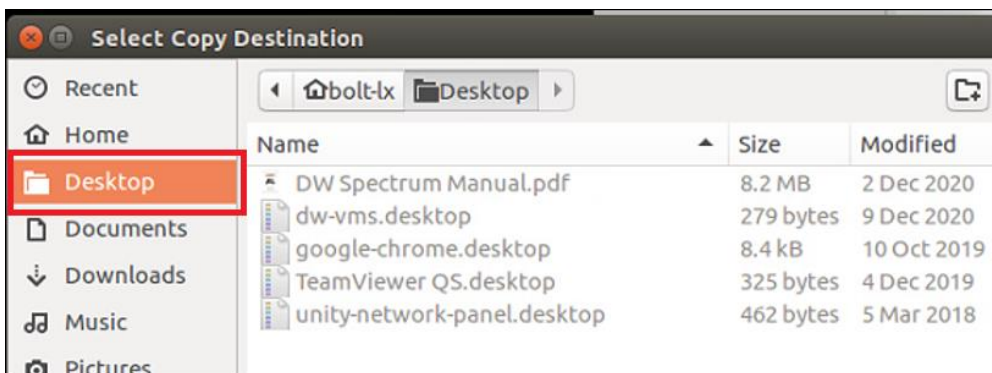
Please contact DW Tech Support if you require an assistance with the installation.  
Submit a support request from <https://digital-watchdog.com/contact-tech-support/>  
or call (866) 446-3595 Option 4

Tech Support Hours: Monday- Friday 9:00am-8:00pm ET (except Holidays)

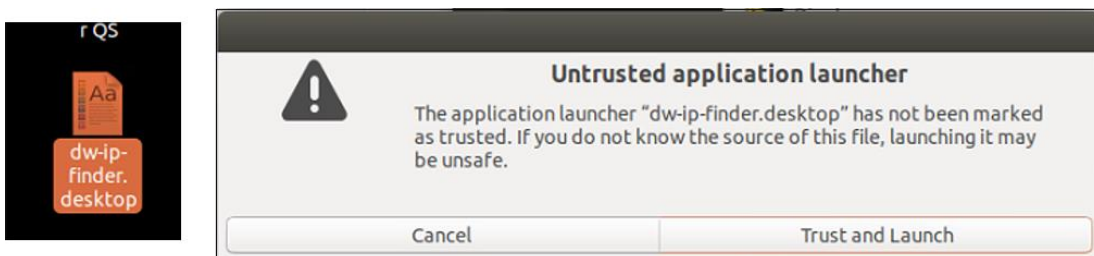
- 2) Locate and **right-click** on the **DW IP Finder** icon. Select “**Copy To...**”.



- 3) When selecting the destination, select “**Desktop**”.



- 4) Next, on the *Desktop*, **double-click** on the **dw-ip-finder.desktop** icon.  
A confirmation window will display. Click the “**Trust and Launch**” button.



- 5) The DW IP Finder™ icon will be placed on the Desktop.  
To launch the program, **double-click** on the **DW IP Finder** shortcut icon.

Please contact DW Tech Support if you require an assistance with the installation.  
Submit a support request from <https://digital-watchdog.com/contact-tech-support/>  
or call (866) 446-3595 Option 4  
Tech Support Hours: Monday- Friday 9:00am-8:00pm ET (except Holidays)



## Uninstalling DW IP Finder™

To uninstall the DW IP Finder™ program:

- 1) Open the **File Manager** application and navigate to the folder:

```
/opt/DW-IP-Finder
```

- 2) **Double-click** the "**uninstall**" option and follow the installation wizard to uninstall the DW IP Finder™ software.



- 7) If you are uninstalling the DW IP Finder™ software from a DW Blackjack® Server, the installation wizard will prompt you to enter the system's Administrator password.

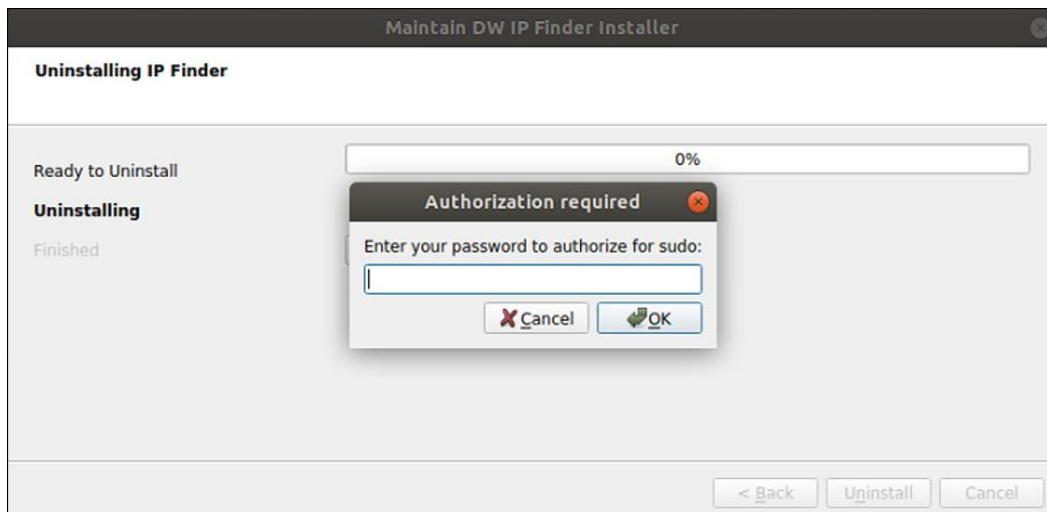
Enter the computer's Administrator password, then click the **OK** button.

Please contact DW Tech Support if you require an assistance with the installation.  
Submit a support request from <https://digital-watchdog.com/contact-tech-support/>  
or call (866) 446-3595 Option 4

Tech Support Hours: Monday- Friday 9:00am-8:00pm ET (except Holidays)

Once the uninstallation has completed, click the **Finish** button.

- For DW Blackjack® units sold using Ubuntu 16.04, the default *sudo* password is "**admin**".
- For DW Blackjack® units sold using Ubuntu 18.04, the default *sudo* password is "**Dw5pectrum**".



**\*\*NOTE:** If you have copied a DW IP Finder icon as a shortcut to the computer's desktop, you may delete the icon following uninstallation.

Please contact DW Tech Support if you require an assistance with the installation.  
Submit a support request from <https://digital-watchdog.com/contact-tech-support/>  
or call (866) 446-3595 Option 4

Tech Support Hours: Monday- Friday 9:00am-8:00pm ET (except Holidays)